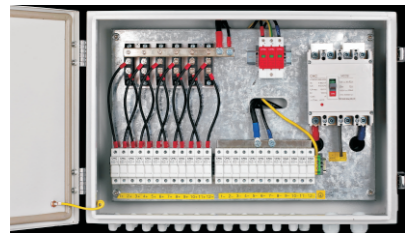
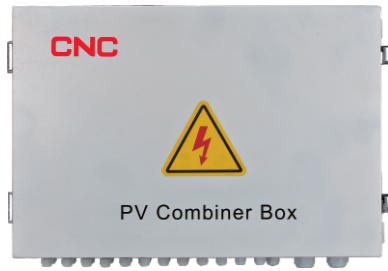


Photovoltaic DC Solutions

YCX8-(Fe) Photovoltaic DC Combiner Box



General

YCX8-(Fe) photovoltaic DC combiner box is suitable for photovoltaic power generation systems with a maximum DC system voltage of DC1500V and an output current of 800A. This product is designed and configured in strict accordance with the requirements of the "Technical Specification for Photovoltaic Combiner Equipment" CGC/GF 037:2014, providing users with a safe, concise, beautiful and applicable photovoltaic system product.

Features

- The box can be made of hot-dip galvanized steel plate or cold-rolled steel plate to ensure that the components do not shake and remain unchanged in shape after installation and operation;
- Protection grade: IP65;
- Can simultaneously access up to 50 solar photovoltaic arrays, with a maximum output current of 800A;
- The positive and negative electrodes of each battery string are equipped with photovoltaic dedicated fuses;
- The current measurement adopts Hall sensor perforated measurement, and the measuring equipment is completely isolated from the electrical equipment;
- The output terminal is equipped with a photovoltaic DC high-voltage lightning protection module that can withstand a maximum lightning current of 40KA;
- The combiner box is equipped with a modular intelligent detection unit to detect the current, voltage, circuit breaker status, box temperature, etc. of each string of components;
- The overall power consumption of the modular combiner box intelligent detection unit is less than 4W, and the measurement accuracy is 0.5%;
- The modular combiner box intelligent detection unit adopts DC 1000V/1500V self power supply mode;
- It has multiple methods for remote data transmission, providing RS485 interface and wireless ZigBee interface;
- The power supply has functions such as simulated reverse connection, overcurrent, overvoltage protection, and anti-corrosion.

Selection

YCX8	16/1	M	D	DC1500	Fe
Product name	Input circuit/output circuit	Monitoring module	Functional protection	Rated voltage	Shell type
Distribution box	6/1 8/1 12/1 16/1 24/1 30/1 50/1	No: without the monitoring module M: Monitoring module	No: without anti-reverse diode module D: with anti-reverse diode module	DC600 DC1000 DC1500	Fe: Iron shell

Note: In addition to relevant core components, others can be customized according to user requirements

Photovoltaic DC Solutions

YCX8-(Fe) Photovoltaic DC Combiner Box

Technical data

Model	YCX8-(Fe)						
Maximum DC voltage	DC1500V						
Input/output circuit	6/1	8/1	12/1	16/1	24/1	30/1	50/1
Maximum input current	0~20A						
Maximum output current	105A	140A	210A	280A	420A	525A	750A
Circuit breaker frame current	250A	250A	250A	320A	630A	700A	800A
Protection degree	IP65						
Input switch	DC fuse						
Output switch	DC molded case circuit breaker (standard)/DC isolation switch						
Lightning protection	Standard						
Anti-reverse diode module	Optional						
Monitoring module	Optional						
Joint type	MC4/PG waterproof joint						
Temperature and humidity	Working temperature: -25°C~+55 °C, humidity: 95%, no condensation, no corrosive gas places						
Altitude	2000m						

Wiring diagram

